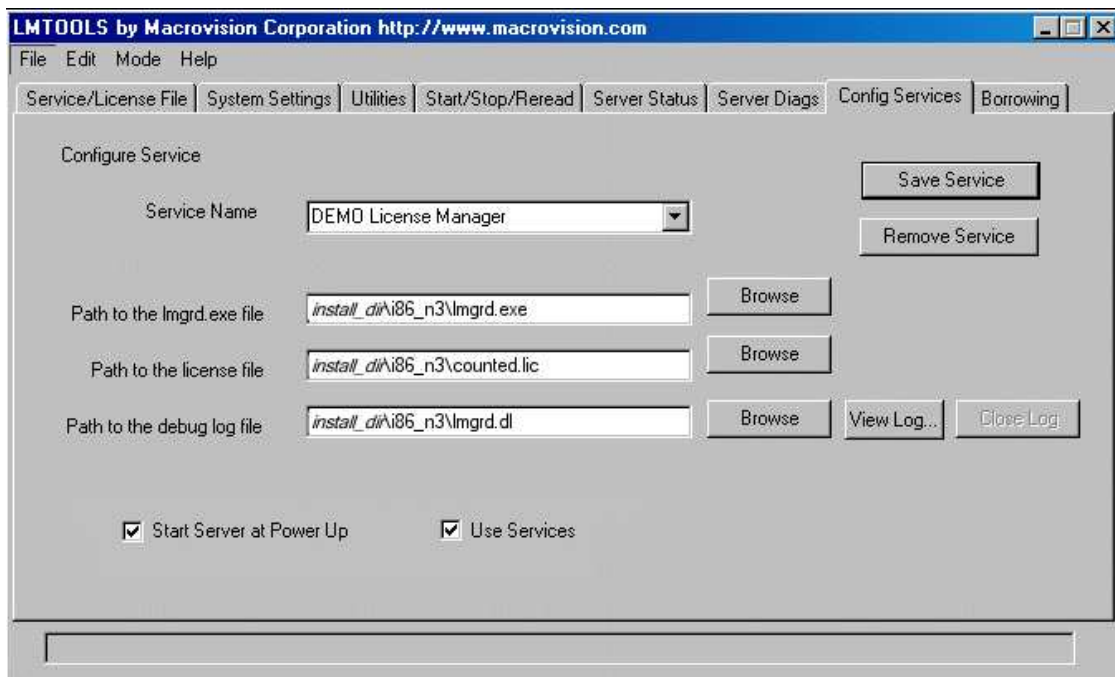


## Configuring the License Server Manager as a Windows Service

To configure a license server system as a service, you must have Administrator privileges.

1. Run *LMTOOLS* from the directory *<CosiMate installation path>\etc*.
2. Click the **Configuration using Services** button, and then click the **Config Services** tab.
3. In the **Service Name**, type the name of the service: *Chiastek License Manager*.
4. In the **Path to the lmgrd.exe file** field, enter or browse to *lmgrd.exe* for this license server system, i.e. *<CosiMate installation path>\etc\lmgrd.exe*.
5. In the **Path to the license file** field, enter or browse to the license file you received from Chiastek for this server.
6. (Optional) In the **Path to the debug log file**, enter or browse to the debug log file that this license server system writes. Prepending the debug log file name with the + character appends logging entries. The default location for the debug log file is the *c:\winnt\System32* folder. To specify a different location, make sure you specify a fully qualified path.



7. To save the new *Chiastek License Manager* service, click **Save Service**.

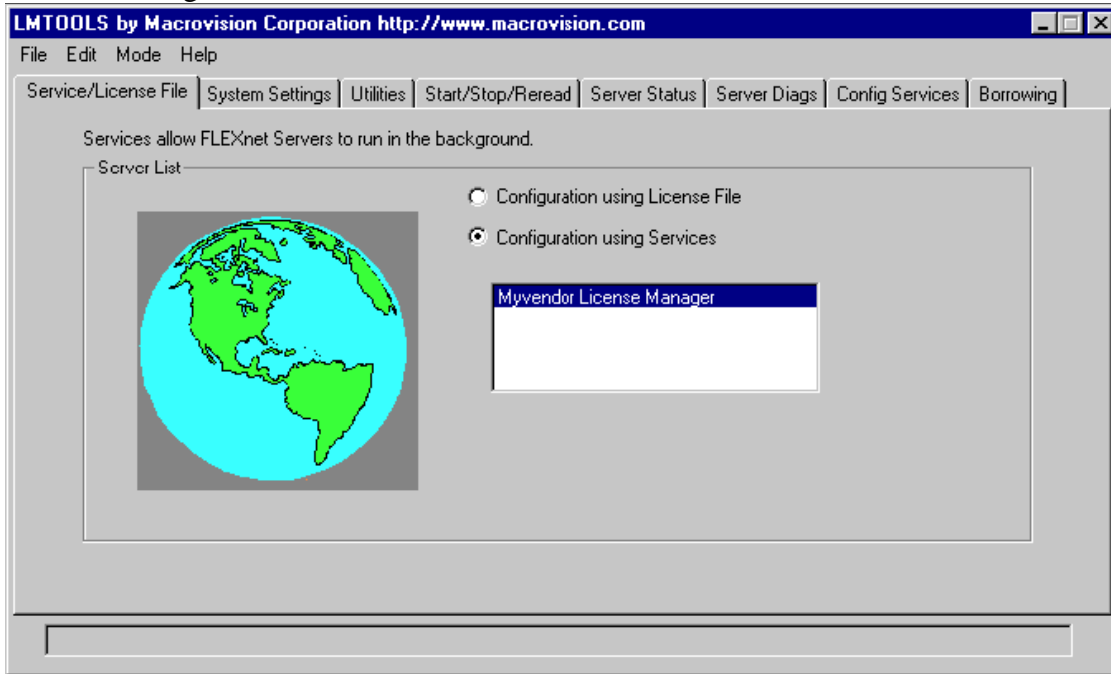
For an automatic start at system start up, follow the two steps below:

8. Make this license server manager a Windows service by selecting the **Use Services** check box (otherwise, it becomes a FLEXnet Licensing service).
9. Configure it to start at system startup time by selecting the **Start Server at Power Up** check box.

10. To save the new *Chiastek License Manager* service, click **Save Service**.

Now, start manually the license server as below or restart Windows.

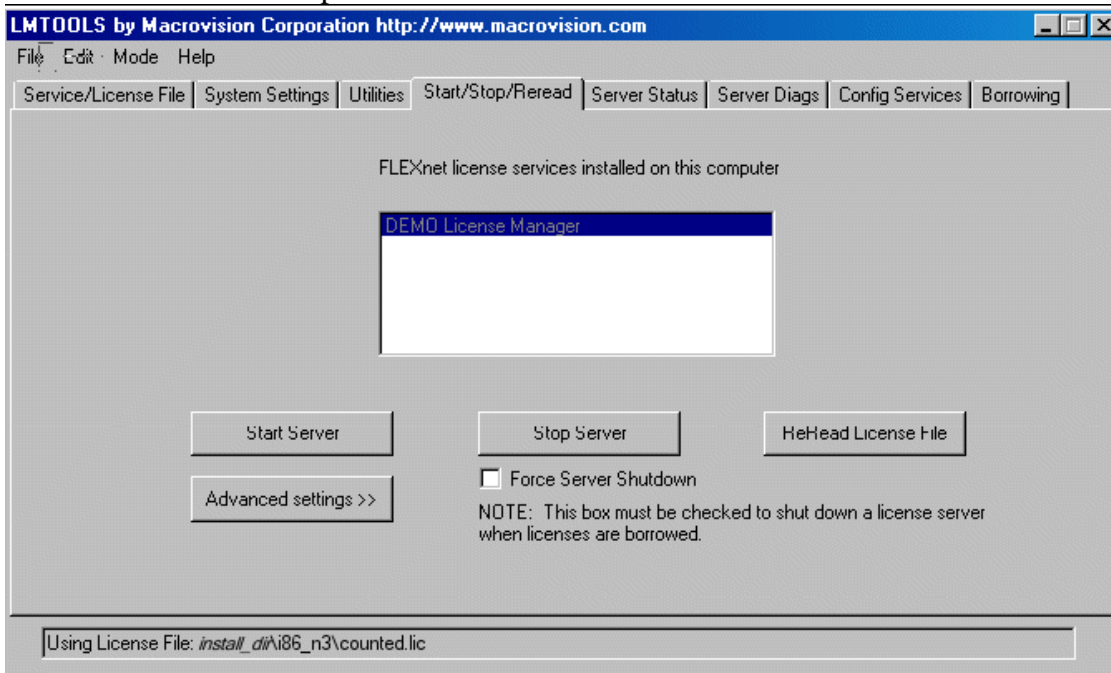
11. To start manually the license server, click the Service/License File tab as shown in the figure below.



12. Click **Configuration using Services** button.

13. Select the service name from the list presented in the selection box. In this example, the service name is *Chiastek License Manager*.

14. Click the Start/Stop/Reread tab.



15. Start *Chiastek License Manager* server by clicking the **Start Server** button.  
*Chiastek License Manager* server system starts and writes its debug log output to the defined log file.